

IHC 產品目錄

Immunohistochemistry Product Catalog

組織前處理

組織澄清透明化試劑盒 1
抗原修復液 1

免疫偵測

阻斷液 2
IHC 實驗用抗體 2
蛋白質交互作用
原位偵測套組 3

多重染色與訊號放大

雙重、三重組織染色套組 4
訊號放大試劑 5

染色與保存

呈色劑與對比染色試劑 6
特殊染色試劑 6, 7
封片膠 7

服務與小工具

IHC 實驗代工服務 7
IHC 實驗檢查清單 8

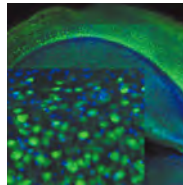


IHC 實驗工具找伯森

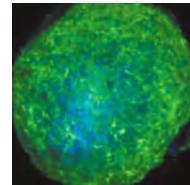
免疫組織化學染色 (immunohistochemistry, IHC) 是使用抗體來檢測、定位組織中特定目標蛋白質的實驗方法，常應用於疾病診斷、藥物開發和生理研究。針對 IHC 實驗，伯森生技提供品質一流的 IHC 抗體和豐富多樣的實驗工具選擇，更具有多年 IHC 實驗代工服務經驗，全方位協助您更快更好地完成 IHC 實驗！歡迎洽詢 [伯森業務專員](#) 索取完整產品資訊。

組織澄清透明化試劑盒 (Tissue Clearing Kits)

Product	Cat. No.
Tissue Clearing Kit - hydrophobic	ab243298
3D Cell Culture Clearing Kit - hydrophobic	ab243299



NeuN antibody [ab177487](#) was used with Tissue Clearing Kit [ab243298](#) to penetrate, stain and clear a 1 mm coronal section of mouse brain.



GFAP antibody [ab7260](#) with 3D Cell Culture Clearing Kit [ab243299](#) and 3D neuronal spheroid cell cultures.

抗原修復液 (Antigen Retrieval Buffers)

Proteolytic-induced epitope retrieval (PIER)

Product	Cat. No.
HistoReveal (15ml)	ab103720
Pepsin Solution (Antigen Retrieval)	ab64201
Proteinase K Antigen Retrieval Solution	ab64220
Trypsin Antigen Retrieval Kit	ab259256
Trypsin Antigen Retrieval Solution	ab970

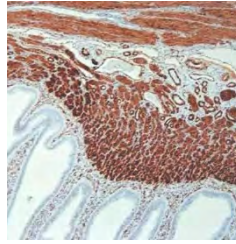
Heat-induced epitope retrieval (HIER)

Product	Cat. No.
10x Citrate Buffer pH 6.0	ab64214
10x EDTA Buffer pH 8.0	ab64216
Antigen Retrieval Buffer (100X Citrate Buffer)	ab93678
Antigen Retrieval Buffer (100X EDTA Buffer, pH 8.0)	ab93680
Antigen Retrieval Buffer (100X Tris Buffer, pH 10.0)	ab93682
Antigen Retrieval Buffer (100X Tris-EDTA Buffer, pH 9.0)	ab93684
Universal HIER antigen retrieval reagent (10X)	ab208572



阻斷液 (Blocking Buffers)

Product	Cat. No.
Avidin/Biotin Blocking Kit	ab64212
Hydrogen Peroxide Blocking Reagent	ab64218
Mouse on Mouse Polymer IHC Kit	ab269452
Protein Block (IHC-P, ELISA, WB)	ab64226



Mouse on Mouse Polymer IHC Kit (ab269452) 是專為使用小鼠來源抗體 (mouse antibody) 檢測小鼠組織 (mouse tissue) 的 IHC 實驗所設計的便利產品。試劑盒中阻斷劑可避免小鼠組織內源性 IgG 干擾，大幅降低背景值；專利技術二級抗體則具有更強的組織穿透性、並帶有多個反應酵素，使靈敏度獲得有效提升！

Mouse on mouse polymer IHC kit [ab269452](#) was tested using an anti-actin mouse monoclonal on formalin-fixed paraffin embedded mouse tissue sections.

IHC 實驗用抗體 (IHC Validated Antibodies)

抗體類型	描述
IHC 驗證一級抗體	可搭配不同標定的二級抗體使用，進行單色或多重染色。
IHC 驗證二級抗體	多種標定選擇 (AP、HRP、Biotin、FITC、Cy3 [®] 、Cy5 [®] 、Alexa Fluor [®] 488、Alexa Fluor [®] 594 …)，滿足酵素呈色和螢光染色需求。
Multiplex IHC 抗體	通過 Opal™ 或 TSA™ 多重染色實驗驗證，效能卓越穩定，是組織多重染色實驗 (Multiplex IHC, mIHC) 的絕佳助力。
Carrier-free 抗體	通過 IHC 實驗驗證的無載體型式重組抗體，搭配抗體標定神器【Lightning-Link [®] 】可輕鬆製備出各種標定一抗。特別適合基於寡核苷酸或金屬原子標定抗體的超多重組織染色實驗使用，例如 InSituPlex [®] 、CODEX [®] 、GeoMx [®] DSP、IMC™ …。
Pre-adsorbed 二級抗體	通過 IHC 實驗驗證的預吸附二級抗體，具有高度專一性，可最大程度降低交叉反應風險，特別適合多重染色或有高背景值困擾時使用。



歡迎洽詢伯森業務專員索取
抗體優惠與完整產品資訊

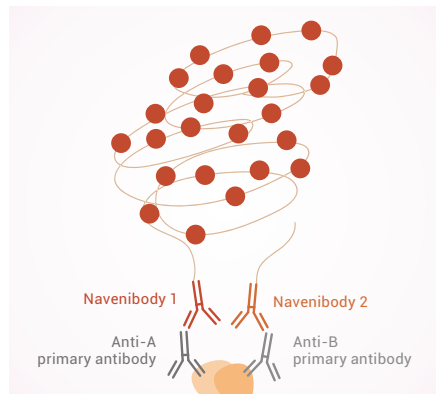
IHC 抗體熱門品項	Cat. No.	IHC 抗體新進品項	Cat. No.
Anti-alpha smooth muscle Actin antibody	ab5694	Alexa Fluor [®] 488 Anti-alpha Sarcoglycan antibody [EPR14773]	ab321851
Anti-Bax antibody [E63]	ab32503	Alexa Fluor [®] 488 Anti-CD37 antibody [EPR28769-31]	ab321859
Anti-beta Actin antibody [mAbcam 8226]	ab8226	Alexa Fluor [®] 488 Anti-Ferritin Light Chain antibody [EPR26117-110]	ab321941
Anti-BrdU antibody [BU1/75 (ICR1)]	ab6326	Alexa Fluor [®] 488 Anti-Lipocalin-2 / NGAL antibody [EPR21092]	ab321939
Anti-CD31 antibody	ab28364	Alexa Fluor [®] 488 Anti-MCT1/Monocarboxylic acid transporter 1 antibody [EPR26702-83]	ab321856
Anti-GAPDH antibody	ab9485	Alexa Fluor [®] 488 Anti-PADI4 / PAD4 antibody [EPR26687-49]	ab321855
Anti-GFP antibody	ab290	Alexa Fluor [®] 488 Anti-Serotonin antibody [EPR24431-201]	ab321853
Anti-Histone H3 (acetyl K27) antibody	ab4729	Alexa Fluor [®] 488 Anti-TIMP1 antibody [EPR18352]	ab321852
Anti-Histone H3 (tri methyl K4) antibody	ab8580	Alexa Fluor [®] 568 Anti-CD73 antibody [EPR28214-169]	ab322132
Anti-Histone H3 antibody	ab1791	Alexa Fluor [®] 647 Anti-CD38 antibody [EPR21079]	ab320778
Anti-Ki67 antibody [SP6]	ab16667		

蛋白質交互作用原位偵測套組 (PPI In Situ PLA Kits)

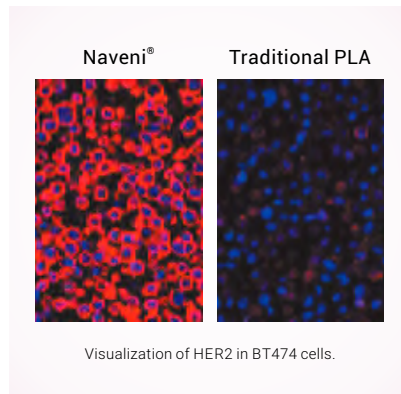
由 Proximity ligation assay (PLA) 技術領導者 Navinci 所開發的 **Naveni® 系列產品** 採用創新 PLA-UnFold 技術，比市面上其他傳統 PLA 產品靈敏度更高、背景更乾淨，是蛋白質交互作用原位染色和癌症藥物篩檢的最佳助力！歡迎洽詢伯森業務專員索取實際應用範例與相關文獻。



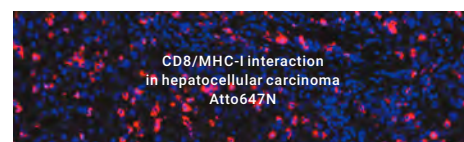
產品目錄



Naveni PLA 技術原理 | 鍵結有專利 Oligo (UnFold probe) 的 Naveni 二級抗體 “Navenibody” 會專一性地辨識標靶蛋白質的一級抗體，唯有在兩個 Navenibodies 間的距離靠得夠近（例如發生蛋白質交互作用時）才會產生有效的訊號放大反應。



Naveni 靈敏度更高 | Naveni 比傳統 PLA 技術產品靈敏度更高、背景更乾淨，能提供更清晰顯著的訊號，節省抗體用量。



Naveni 產品應用範例 | Naveni 適用於蛋白質交互作用或蛋白質轉譯後修飾的原位染色，上圖展示了 Naveni 偵測套組的實際實驗數據。

Naveni® PPI 針對特定蛋白質交互作用所設計的偵測套組。內含一級抗體與 Naveni 偵測抗體等必須試劑，適用於 IHC 實驗。

Product	Sample	Signal	Cat. No.
Naveni CD8/MHC-I Atto647N	FFPE human tissue samples	Fluorophore Atto647N	NV-PPI.TCR01.FR.100
Naveni PD1/PD-L1 AP	FFPE human tissue samples	AP substrate	NV-PPI.PDL1.AP.100
Naveni PD1/PD-L1 HRP	FFPE human tissue samples	HRP substrate	NV-PPI.PDL1.HRP.100
Naveni PD1/PD-L1 Atto647N	FFPE human tissue samples	Fluorophore Atto647N	NV-PPI.PDL1.FR.100

Naveni® PTM 針對特定磷酸化蛋白質所設計的偵測套組。內含一級抗體與 Naveni 偵測抗體等必須試劑，適用於 IHC 實驗。

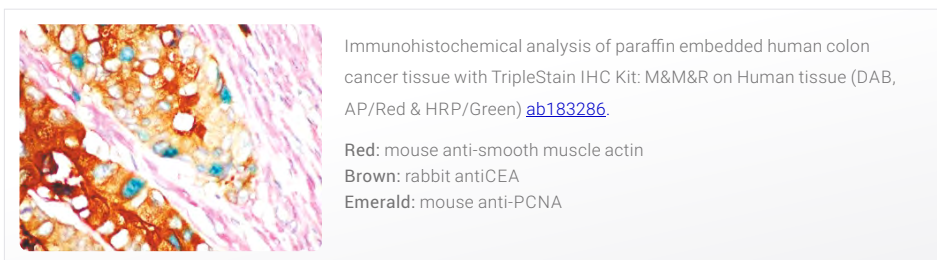
Product	Sample	Signal	Cat. No.
Naveni pY PD1 AP	Tissue samples	AP substrate	NV-NPT.PD1.AP.100
Naveni pY PD1 HRP	Tissue samples	HRP substrate	NV-NPT.PD1.HRP.100

NaveniBright and NaveniFlex™ 可自行依照一級抗體宿主種選擇適用的偵測套組。內含 Naveni 偵測抗體等必須試劑，適用於 IF、ICC、IHC 實驗。

Product	Sample	Signal	Cat. No.
NaveniBright AP	Cells, fresh-frozen, and FFPE samples	AP substrate	NV-NB.MR.AP.100
NaveniBright HRP	Cells, fresh-frozen, and FFPE samples	HRP substrate	NV-NB.MR.HRP.100
NaveniFlex Tissue GM Atto647N	Tissue samples	Fluorophore Atto647N	NV-NT.GM.100.Atto647N
NaveniFlex Tissue GM Red	Tissue samples	Fluorophore TEX615	NV-NT.GM.100.Red
NaveniFlex Tissue GR Atto647N	Tissue samples	Fluorophore Atto647N	NV-NT.GR.100.Atto647N
NaveniFlex Tissue GR Red	Tissue samples	Fluorophore TEX615	NV-NT.GR.100.Red
NaveniFlex Tissue MR Atto647N	Tissue samples	Fluorophore Atto647N	NV-NT.MR.100.Atto647N
NaveniFlex Tissue MR Red	Tissue samples	Fluorophore TEX615	NV-NT.MR.100.Red

雙重、三重組織染色套組 (DoubleStain/TripleStain IHC Kit)

- 配件完整，使用便利，品質有保障：含二級抗體、呈色劑及封片膠等試劑，部分商品尚附有可避免小鼠組織內源性 IgG 干擾的阻斷液，讓您可以使用小鼠來源抗體 (mouse antibodies) 檢測小鼠組織 (mouse tissues)。
- 高訊噪比：二級抗體帶有多個 HRP 或 AP 酵素，可有效放大訊號，並避免樣本中內源性 Biotin 所造成的背景值，有效提高訊噪比。
- 顏色組合多元：有紅、綠、紫、棕、黑等多種顏色選擇。



雙重組織染色套組

For use with	Product	Cat. No.
Goat and Rat primary antibodies	DoubleStain CL IHC Kit: G&Rt on human/mouse tissue (HRP/Green & AP/Red)	ab183282
	DoubleStain IHC Kit: G&Rt on human/mouse tissue (BCIP & AEC)	ab183281
	DoubleStain IHC Kit: G&Rt on human/mouse tissue (DAB & AP/Red)	ab183280
Goat and Mouse primary antibodies	DoubleStain IHC kit: G&M on human tissue (BCIP & AEC)	ab183271
	DoubleStain IHC Kit: G&M on human tissue (Green/HRP & AP/Red)	ab183272
Two distinct Mouse primary antibodies	DoubleStain Co-Localization IHC Kit: M&M on rodent tissue (Green/HRP & AP/Red)	ab183275
	DoubleStain IHC Kit: M&M on rodent tissue (DAB & AP/Red)	ab183273
Mouse and Rabbit primary antibodies	DoubleStain IHC Kit: M&R on human tissue (BCIP & AEC)	ab210060
	DoubleStain IHC Kit: M&R on human tissue (DAB & AP/Red)	ab210059
	DoubleStain IHC Kit: M&R on human tissue (HRP/Green & AP/Red)	ab210061
Mouse and Rat primary antibodies	DoubleStain IHC Kit: M&Rt on mouse tissue (BCIP & AEC)	ab183278
Rabbit and Rat primary antibodies	DoubleStain IHC Kit: R&Rt on human/mouse tissue (DAB & AP/Red)	ab183283
	DoubleStain IHC Kit: R&Rt on human/mouse tissue (Green/HRP & AP/Red)	ab183285

三重組織染色套組

For use with	Product	Cat. No.
Mouse, Mouse and Rabbit primary antibodies	TripleStain IHC Kit: M&M&R on Human tissue (DAB, AP/Red & HRP/Green)	ab183286
	TripleStain IHC kit: M&M&R on rodent tissue (DAB, HRP/Green & AP/Red)	ab183292
Mouse, Rabbit and Goat primary antibodies	TripleStain IHC Kit: M&R&G on human tissue (DAB, AP/Red & DAB/Ni)	ab183291
	TripleStain IHC Kit: M&R&G on human tissue (DAB, AP/Red & HRP/Green)	ab183290
Mouse, Rabbit and Rat primary antibodies	TripleStain IHC Kit: M&R&Rt on rodent tissue (DAB, DAB/Ni & AP/Red)	ab183298
	TripleStain IHC Kit: M&R&Rt on rodent tissue (DAB, HRP/Green & AP/Red)	ab183297
Rabbit, Rabbit and Mouse primary antibodies	TripleStain IHC Kit: R&R&M on human tissue (DAB, AP/Red & Green/HRP)	ab183288
	TripleStain IHC Kit: R&R&M on rodent tissue (DAB, AP/Red & HRP/Green)	ab183295

PSA™ 訊號放大試劑 (Power Styramide™ Signal Amplification Products)

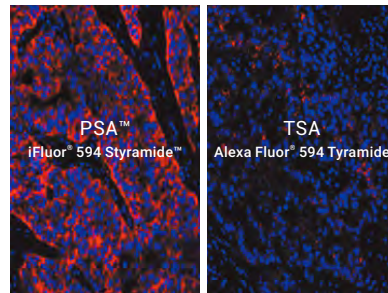
PSA™ 訊號放大試劑適用於放大 IHC、ICC、ISH 實驗訊號。使用時僅需在原本實驗流程中添加兩個步驟：

(1) 加入 HRP 酵素 (2) 加入 PSA 訊號放大試劑，即可在短短十分鐘內感受到明顯的訊號放大效果！

- 放大訊號達 100 倍以上！
- 有效節省抗體或探針用量。
- 螢光種類多元，適用於多重染色實驗。



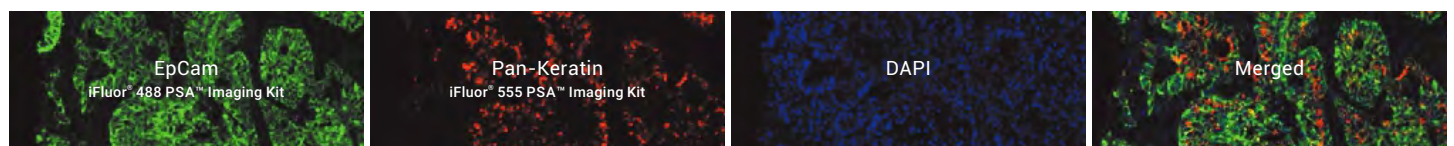
PSA™ 技術原理 | 二級抗體帶有的 HRP 酵素可活化 PSA™ 核心試劑「Styramide」，使其大量且迅速地鍵結在待測目標上。藉由在 Styramide 上標定螢光或半抗原 (例如 Biotin)，即可使目標分子帶有大量螢光或呈色訊號，進而達到訊號放大效果。



PSA™ 能夠提供比 TSA 產品更清晰顯著的螢光訊號 | Fluorescence IHC of FFPE human lung adenocarcinoma using PSA™ and TSA amplified methods. Tissues were stained with anti-EpCam antibody. Nuclei were counterstained with Nuclear Blue™ DCS1.

一級抗體稀釋倍率	1:500	1:1000	1:2000	1:4000	1:8000	1:16000
iFluor® 488 Styramide (PSA™ technology)						
Alexa Fluor® 488 Tyramide (TSA technology)						
Alexa Fluor® 488 2nd Antibody (No Amplification)						

PSA™ 比 TSA 產品抗體用量更省、訊號更清晰 | HeLa cells were fixed, permeabilized, and labeled with various concentrations of rabbit anti-tubulin primary antibody. Cells were then stained with reagents in iFluor® 488 PSA™ Imaging Kit with goat anti-rabbit IgG, an Alexa Fluor® 488-labeled tyramide, or an Alexa Fluor® 488-labeled goat anti-rabbit IgG.



PSA™ 適用於多重染色實驗 | Sequential immunostaining of FFPE human lung adenocarcinoma using iFluor® PSA™ Imaging kits. EpCam were labeled with rabbit anti-EpCam antibodies and iFluor® 488 PSA™ Imaging Kit with goat anti-rabbit IgG, followed by washing. Pan-Keratin was labeled with mouse anti-pan Keratin antibodies and iFluor® 555 PSA™ Imaging Kit with goat anti-mouse IgG. Nuclei were labeled with DAPI.

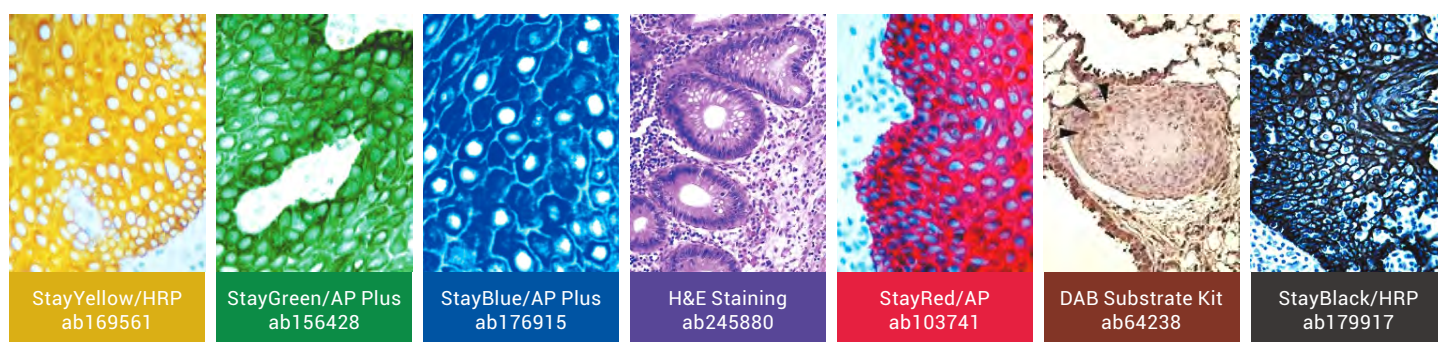


PSA 系列產品有多種款式選擇
歡迎洽詢伯森業務專員索取完整產品資訊

Biotin	iFluor® 350	iFluor® 488	iFluor® 555	iFluor® 633	iFluor® 700
DIG	iFluor® 405	iFluor® 514	iFluor® 568	iFluor® 647	iFluor® 750
DNP	iFluor® 450	iFluor® 546	iFluor® 594	iFluor® 680	iFluor® 790

呈色劑與對比染色試劑 (Substrates and Counterstains)

Product	Cat. No.	Product	Cat. No.
AEC Single/Plus (30ml)	ab103742	NBT / BCIP Solution - Ready to Use Alkaline Phosphatase Chromogen	ab7468
AEC Substrate Kit	ab64252	Nuclear Fast Red Solution	ab246831
Alkaline Phosphatase chromogen (BCIP/TNBT)	ab7413	StayBlack/HRP	ab179917
Alkaline Phosphatase Enhancer	ab671	StayBlue/AP Plus	ab176915
DAB Enhancer	ab675	StayGreen/AP Plus (Alcohol and Xylene Substitute Compatible)	ab156428
DAB Substrate Kit	ab64238	StayRed/AP (Alcohol & Xylene Compatible)	ab103741
Fast Red Substrate Kit	ab64254	StayYellow/HRP	ab169561
H&E Staining Kit (Hematoxylin and Eosin)	ab245880		
Hematoxylin Solution (Mayer's, Modified)	ab220365		



StayYellow/HRP
ab169561

StayGreen/AP Plus
ab156428

StayBlue/AP Plus
ab176915

H&E Staining
ab245880

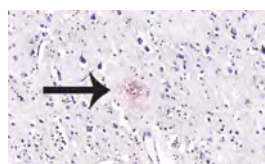
StayRed/AP
ab103741

DAB Substrate Kit
ab64238

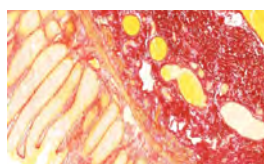
StayBlack/HRP
ab179917

特殊染色試劑 (Special Stains) *更多品項請見下頁

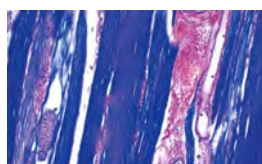
Target	Product	Cat. No.
類澱粉蛋白(Amyloid)	Congo Red Stain Kit (Amyloid Stain)	ab150663
肌肉組織、膠原蛋白 I&III	Picro Sirius Red Stain Kit (Connective Tissue Stain)	ab150681
膠原蛋白、橫紋肌、神經膠質纖維	Phosphotungstic Acid Hematoxylin (PTAH) Stain Kit (Connective Tissue Stain)	ab150683
彈性纖維、彈性蛋白	Elastic Stain Kit (Verhoeff Van Gieson / EVG Stain)	ab150667
B 型肝炎表現抗原 (HBsAg)、彈性纖維、銅相關蛋白	Orcein Stain Kit (Hepatitis B and Elastic Fibers)	ab245881
結締組織	Trichrome Stain Kit (Connective Tissue Stain)	ab150686



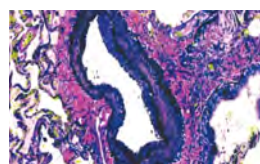
Congo Red Stain Kit (Amyloid Stain) [ab150663](#) staining amyloid (red, black arrow) in FFPE human Alzheimer's brain.



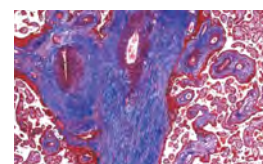
Picro Sirius Red Stain Kit (Connective Tissue Stain) [ab150681](#) staining collagen (red), muscle fibres (yellow), cytoplasm (yellow) and red blood cells (yellow) in FFPE normal human colon.



Phosphotungstic Acid Hematoxylin (PTAH) Stain Kit (Connective Tissue Stain) [ab150683](#) staining FFPE human skeletal muscle.



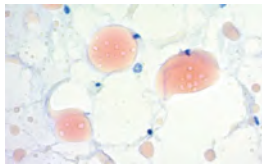
Elastic Stain Kit (Verhoeff Van Gieson / EVG Stain) [ab150667](#) staining elastic fibres (blue/black) and collagen (red/pink) in FFPE normal human lung. Muscle and other tissues appear yellow.



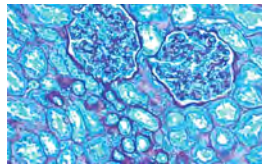
Trichrome Stain Kit (Connective Tissue Stain) [ab150686](#) staining collagen (blue) and muscle fibre (red) in FFPE normal human placenta. Nuclei are counterstained with Weigert's hematoxylin (blue).

特殊染色試劑 (Special Stains) *承上頁

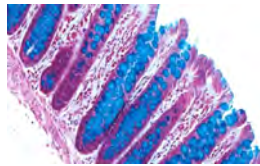
Target	Product	Cat. No.
脂質與脂肪	Oil Red O Stain Kit (Lipid Stain)	ab150678
淋巴細胞、黏多醣	Periodic Acid Schiff (PAS) Stain Kit (Mucin Stain)	ab150680
黏多醣	Mucicarmine Stain Kit (Mucin Stain)	ab150677
黏多醣、醣蛋白	Alcian Blue Stain Kit (pH 2.5, Mucin Stain)	ab150662
黑色素、嗜銀細胞顆粒	Fontana-Masson Stain Kit (Melanin Stain)	ab150669
銅顆粒	Copper Stain Kit	ab150666
鈣顆粒	Von Kossa Stain Kit (Calcium Stain)	ab150687



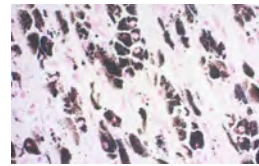
Oil Red O Stain Kit (Lipid Stain) [ab150678](#) staining frozen human human adipose.



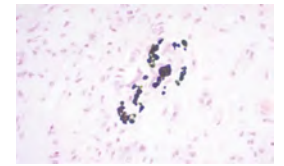
Periodic Acid Schiff (PAS) Stain Kit (Mucin Stain) [ab150680](#) staining FFPE human kidney. Showing fungal organisms (magenta), PAS Positive Material (Magenta), Nuclei (Black/Blue) and other tissue components (Green/Blue).



Alcian Blue Stain Kit (pH 2.5, Mucin Stain) [ab150662](#) staining acidic sulphated mucins (blue) in FFPE normal human colon, counterstained with safranin o (pink).



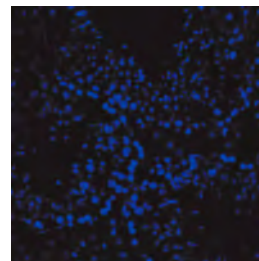
Fontana-Masson Stain Kit (Melanin Stain) [ab150669](#) staining FFPE human skin melanoma.



Von Kossa Stain Kit (Calcium Stain) [ab150687](#) staining FFPE human liver.

封片膠 (Mounting Media)

Product	Cat. No.
Anti-Fade Fluorescence Mounting Medium - Aqueous, Fluoroshield	ab104135
Glycerol Mounting Medium - Anti-Fade with DAPI	ab188804
Limonene Mounting Medium	ab104141
Mounting Medium for IHC - Aqueous	ab64230
Mounting Medium With DAPI - Aqueous, Fluoroshield	ab104139
Mounting Medium With PI - Aqueous, Fluoroshield	ab104129



Adult mouse testes were fixed with 4% paraformaldehyde. Tissue was embedded in O.C.T. and frozen. 5 micron sections were cut and transferred to slides. Sections were permeabilized with 0.1% Triton X-100 in PBS and stained with undiluted Mounting Medium With DAPI - Aqueous, Fluoroshield [ab104139](#).

IHC 實驗代工服務 (Immunohistochemistry Service)

- 採用臨床診斷等級 Leica 設備進行全自動化處理，減少人為操作變因。
- 收件後約 14 個工作天即可取得結果。
- 歡迎洽詢 [伯森業務專員](#) 索取服務詳情。

服務流程



IHC 實驗檢查清單

請於確實做到的部分打 ，並盡可能詳實記錄，以便後續重複實驗或進行優化

日期	組織	目標蛋白質
實驗基本資訊	確認組織切片資訊	切片類型： <input type="checkbox"/> 石蠟切片 <input type="checkbox"/> 冷凍切片 <input type="checkbox"/> 浮動切片，切片厚度 _____ μm
	了解目標蛋白質特性	<input type="checkbox"/> 已確認目標蛋白質會在組織樣本中表現 <input type="checkbox"/> 已確認目標蛋白質的表現位置是位於 <input type="radio"/> 細胞核 <input type="radio"/> 細胞質 <input type="radio"/> 細胞膜 <input type="radio"/> 胞外
	設立對照組	<input type="checkbox"/> 陽性對照組 _____ <input type="checkbox"/> 陰性對照組 _____ <input type="checkbox"/> 不加一抗只加二抗的對照組
固定	避免蛋白質降解 ¹²³	<input type="checkbox"/> 組織樣本為新鮮採集，且離開活體後有立即浸泡在樣本固定液或液態氮中
	樣本固定條件	使用 <input type="checkbox"/> 交聯試劑(如福馬林、甲醛) <input type="checkbox"/> 有機溶劑(如甲醇、丙酮) 作為固定液，固定時間 _____
抗原修復	選擇合適的抗原修復方法 ²	<input type="checkbox"/> 已參照 <input type="radio"/> 產品說明書 <input type="radio"/> 文獻 PMID _____ 選用適合的抗原修復方法
	抗原修復條件	<input type="checkbox"/> 酵素誘導抗原修復法，使用酵素 _____，作用濃度 _____，溫度 _____ $^{\circ}\text{C}$ ，時間 _____ <input type="checkbox"/> 熱誘導抗原修復法，使用 pH _____ 的 _____ 作為抗原修復液，溫度 _____ $^{\circ}\text{C}$ ，時間 _____
通透處理	確認是否需要進行通透處理	<input type="checkbox"/> 我的切片厚度大於 5 μm 、或目標蛋白質位於細胞內，因此需要進行通透處理步驟 <input type="checkbox"/> 我使用甲醇或丙酮作為固定液，因此可以跳過此步驟
	通透(打洞)處理條件	<input type="checkbox"/> 0.2% Triton X-100, 10 分鐘 <input type="checkbox"/> 其他 _____
阻斷	內源性物質阻斷	<input type="checkbox"/> 根據二抗偶聯物(如 HRP, AP, Biotin) 決定使用 _____ 作為阻斷液，溫度 _____ $^{\circ}\text{C}$ ，時間 _____
	非專一性結合阻斷	<input type="checkbox"/> 使用 <input type="radio"/> 與二抗相同物種的血清 <input type="radio"/> BSA <input type="radio"/> 其他 _____，作用濃度 _____，溫度 _____ $^{\circ}\text{C}$ ，時間 _____
	削減自體螢光	<input type="checkbox"/> 已在阻斷液中添加 0.3M Glycine 改善甲醛固定液帶來的自體螢光問題
抗體反應	選用合適的抗體	<input type="checkbox"/> 抗體通過 IHC 實驗驗證
		<input type="checkbox"/> 抗體為新鮮配製，沒有重複使用
		<input type="checkbox"/> 選用預吸附二級抗體進行多重染色，避免背景值過高
	抗體孵育條件	一級抗體稀釋比例 _____，孵育溫度 _____ $^{\circ}\text{C}$ ，時間 _____ 二級抗體稀釋比例 _____，孵育溫度 _____ $^{\circ}\text{C}$ ，時間 _____ <input type="checkbox"/> 在濕盒中進行抗體孵育 <input type="checkbox"/> 螢光抗體已全程避光操作
複染	選用合適的對比染色試劑	使用 _____ 進行複染
訊號偵測	酵素呈色注意事項	<input type="checkbox"/> 呈色劑為新鮮配製，並優化測試呈色劑最佳作用濃度與反應時間
	螢光染色注意事項	<input type="checkbox"/> 染色完成後的切片已全程避光置於暗盒中 <input type="checkbox"/> 已盡快完成影像收集
封片	選擇合適的封片膠	<input type="checkbox"/> 使用水溶性封片膠 *適用於所有類型的呈色劑，如 AEC, BCIP/NBT, DAB, Fast Red... <input type="checkbox"/> 使用油溶性封片膠 *適用於能經由酵素作用產生有色沉澱物的呈色劑，如 DAB 或 H&E 染色 <input type="checkbox"/> 使用螢光實驗專用的水溶性封片膠(含螢光保護劑)

(1) 理想的樣本固定時間取決於樣本大小及類型，大多數的樣本可使用 10% 中性福馬林於室溫固定 18-24 小時

(2) 冷凍切片應避免使用交聯試劑類固定液，以免後續需要抗原修復

(3) 若目標蛋白為跨膜蛋白不可使用有機溶劑類固定液